

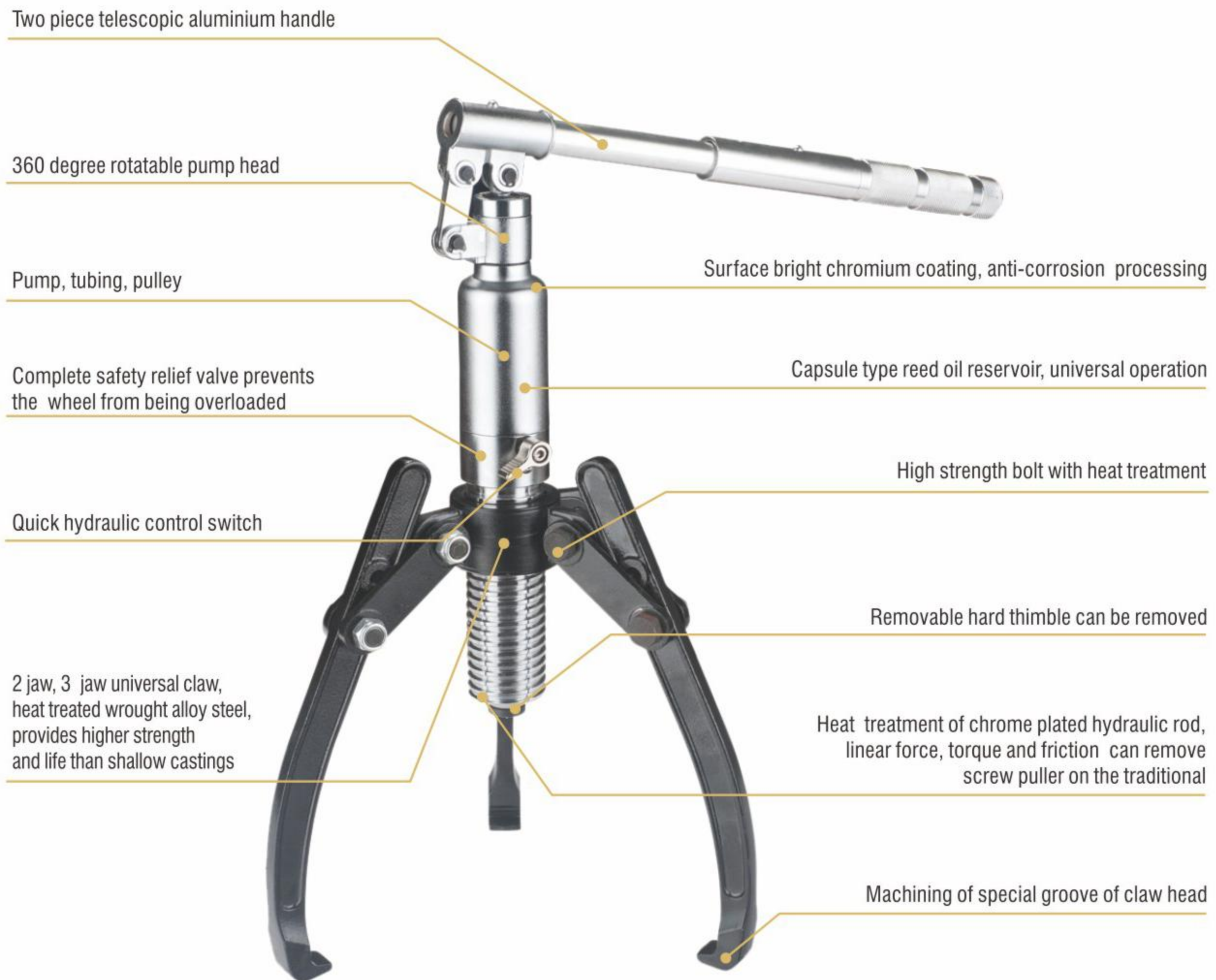
GEAR PULLER / STEEL CYLINDER SERIES

CRAFTED WITH PRECISION,
THE QUALITY CAN BE LEARNED



INTEGRAL-UNIT HYDRAULIC GEAR PULLER

YL-5T / YL-10T



TECHNICAL DATA

Model No.	YL-5T	YL-10T
Power	5T	10T
Spread	200mm	250mm
Reach	140mm	160mm
Arise travel	50mm	50mm

FEATURES:

- Using new type of hydraulic gear puller is convenient for operating.
- Workers can exchange two jaws and three jaws freely in the scene working.
- The puller can be touched working center quickly after rotary according to the distance between puller and piston center.
- The jaws with three can be adjusted from high to low point.



TECHNICAL DATA

Model No.	HL-5T	HL-10T	HL-15T	HL-20T	HL-30T	HL-50T
Power	5T	10T	15T	20T	30T	50T
Spread	200mm	250mm	300mm	350mm	400mm	500mm
Reach	140mm	160mm	180mm	200mm	200mm	220mm
Ares travel	50mm	50mm	50mm	50mm	50mm	65mm

FEATURES:

- Using new type of hydraulic gear puller is convenient for operating.
- Workers can exchange two jaws and three jaws freely in the scene working.
- The puller can be touched working center quickly after rotary according to the distance between puller and piston center.
- The jaws with three can be adjusted from high to low point.

SPLIT-UNIT HYDRAULIC GEAR PULLER



- Using new type of hydraulic gear puller is convenient for operating.
- Workers can exchange two jaws and three jaws freely in the scene working.
- The puller can be touched working center quickly after rotary according to the distance between puller and piston center.
- It can choose pump freely HP-700,HP-180.
- The jaws with three can be adjusted from high to low point.



TECHNICAL DATA

Model No.	SL-5T	SL-10T	SL-15T	SL-20T	SL-30T	SL-50T
Power	5T	10T	15T	20T	30T	50T
Spread	200mm	250mm	300mm	350mm	400mm	500mm
Reach	140mm	160mm	180mm	200mm	250mm	300mm
Ares travel	50mm	50mm	50mm	50mm	75mm	75mm

- Low height is suit for working in narrowness; Short stroke can block up times and times.
- The surface of plunger is finished with chrome plate to protect the using of longevity of the product.
- Plunger has the function of retracting automatically.



DESCRIPTION OF PARTS

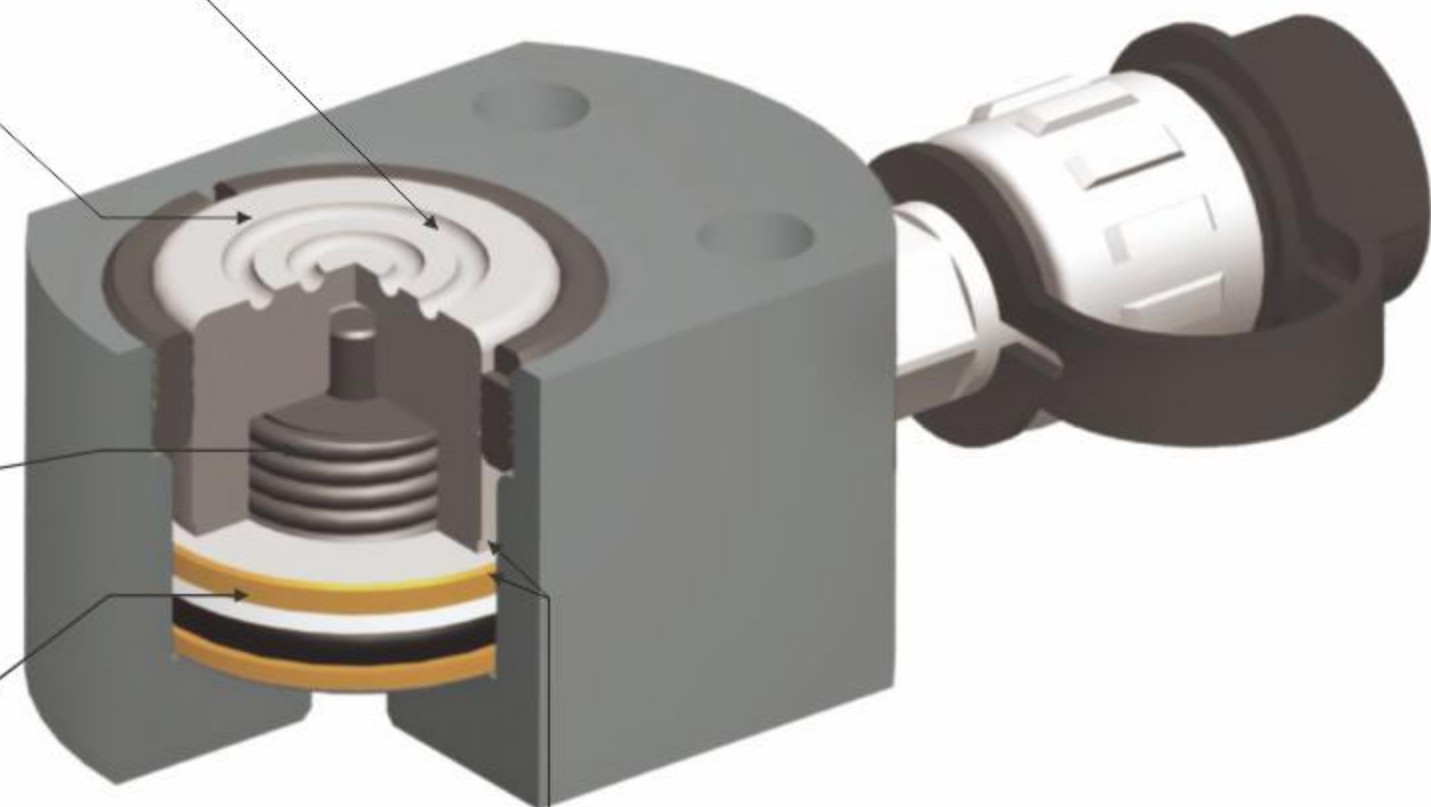
1.Principal axis(avoid axis break when it is overloading)

2.Stopping ring (to protect the cylinder when the stroke get to top, absorb heaviness on the other side.)

3.Spring(provide the capability of quick flexing)

4.Brass ring(use high quality of brass to joint, to protect the status of overloading and absorb heaviness on the other side.)

5.Cylinder wall and principal axis
(they can avoid eroding and less friction by chrome plate)



TECHNICAL DATA

Model No.	Output (t)	Stroke (mm)	Effective area (cm ²)	Oil capacity (l)	Height of Product (mm)	Extended Height (mm)	Outside dia (Φ mm)	Bore dia (Φ mm)	Plunger dia (Φ mm)	Thread for Input oil-port (zg)	Saddle Protrusion From plgr (mm)	Weight (kg)
RMC-051	5	11	4.9	0.0078	43	54	51 × 40	30	25	NPT1/4"	1	0.65
RMC-101	10	11	11.3	0.016	47	58	81 × 56	43	38	3/8"-19	2	1.5
RMC-201	20	11	22	0.031	52	63	100 × 77	60	53	3/8"-19	2	2.7
RMC-301	30	12	31.1	0.05	63	75	115 × 95	75	63	3/8"-19	2	4.5
RMC-501	50	16	56.7	0.113	69	85	138 × 115	95	85	3/8"-19	2	7.4
RMC-1001	100	16	95	0.211	86	102	185 × 160	130	110	3/8"-19	2	15.5
RMC-1501	150	18	162.8	0.338	93	111	234 × 200	164	144	3/8"-19	2	25.4
RMC-2001	200	18	224.2	0.505	100	118	274 × 239	189	169	3/8"-19	2	38.1

RMC L-MULTISTAGE HYDRAULIC STEEL CYLINDER

- The stroke of RMC-L series are higher than RMC series

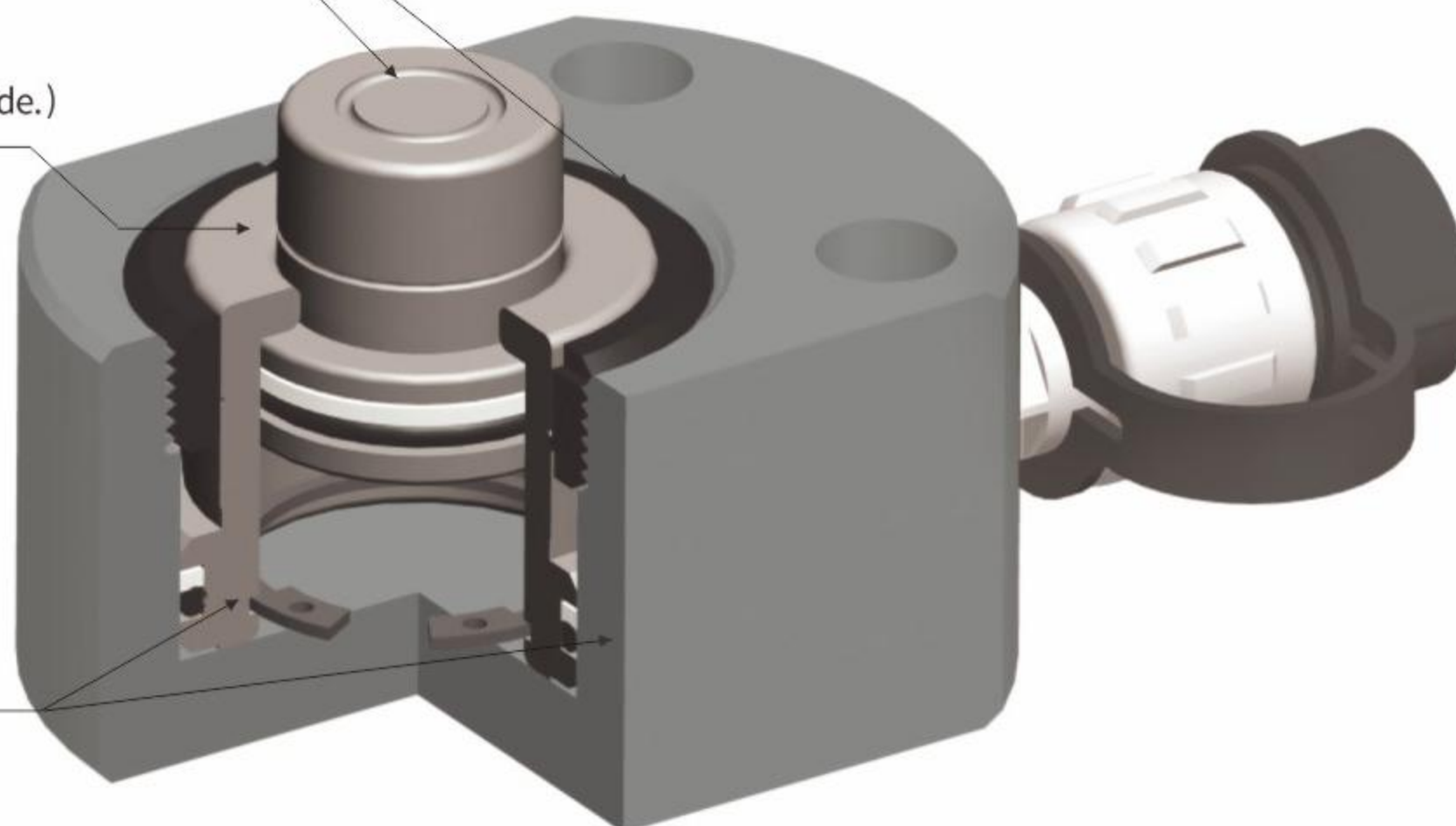


DESCRIPTION OF PARTS

1. Principal axis (more section designed to heighten the stroke)

2. Stopping ring (to protect the cylinder when the stroke get to top, absorb heaciness in the other side.)

3. O-ring
great effect for seaking and hold longevity.



TECHNICAL DATA

Model No.	Output (t)	Stroke (mm)	Effective area (cm ²)	Oil capacity (l)	Height of Product (mm)	Extended Height (mm)	Outside dia (Φ mm)	Bore dia (Φ mm)	Plunger dia (Φ mm)	Weight (kg)
RMC-101L	10	25	11.3	0.022	47	74	81x56	43	38	1.5
RMC-201L	20	26	19.6	0.041	52	80	100x77	60	53	2.7
RMC-301L	30	53	33.1	0.058	63	118	115x95	75	63	4.2
RMC-501L	50	64	56.7	0.113	69	135	138x115	95	85	7.2
RMC-1001L	100	75	95	0.225	86	163	185x160	130	110	15

- The surface of principle axis is finished with chrome plate to protect the using of longevity of the product.
- Principle axis has the function of retracting automatically.
- Surface coating resists corrosion, extending cylinder life.
- Hardy underlay to avoid axis break when it is overloading.



DESCRIPTION OF PARTS

1.Hardy underlay

(avoid plunger break when it is overloading)

2.Stopping ring

(to protect the cylinder when the stroke get to top, absorb heaviness in the other side.)

3.Spring

(provide the capability of quick flexing)

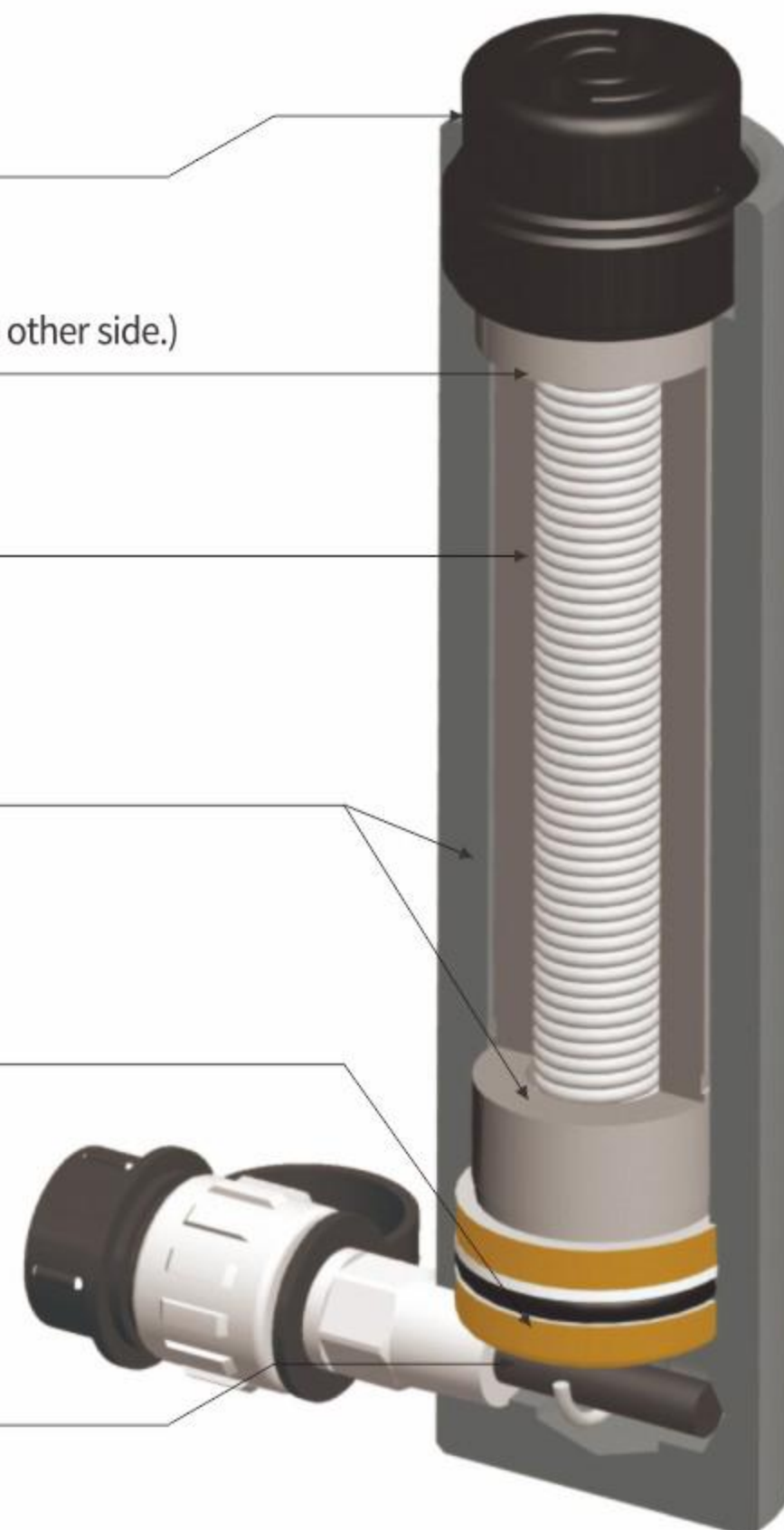
4.Cylinder wall and principal axis

(they can avoid eroding and less friction by chrome plate)

5.O-ring

(great effect for sealing and hold longevity.)

6.Bronze ring(use high quality of bronze to joint, to protect the status of overloading and absorb heaviness in the other side.)



RSC-SINGLE HYDRAULIC CYLINDER

TECHNICAL DATA

Model No.	Output (t)	Stroke (mm)	Effective area (cm ²)	Oil capacity (l)	Height of Product (mm)	Extended Height (mm)	Outside Dia (Φmm)	Bore dia (Φ mm)	Plunger dia (Φ mm)	Thread for Input oil-port (zg)	Saddle Protrusion from Plgr(mm)	Weight (kg)
RSC-0550	5	50	9.6	0.036	133	183	40	30	25	1/4"-19	13	
RSC-05100	5	100	9.6	0.071	183	283	40	30	25	1/4"-19	13	3
RSC-05150	5	150	9.6	0.108	232	382	40	30	25	1/4"-19	13	1.9
RSC-1050	10	50	15.2	0.075	139	189	58	43	38	3/8"-19	17	2.95
RSC-10100	10	100	15.2	0.152	189	289	58	43	38	3/8"-19	17	3.9
RSC-10150	10	150	15.2	0.228	239	389	58	43	38	3/8"-19	17	4.9
RSC-2050	20	50	33.2	0.166	157	207	88	65	58	3/8"-19	20	6.4
RSC-20100	20	100	33.2	0.332	207	307	88	65	58	3/8"-19	20	8,05
RSC-20150	20	150	33.2	0.498	257	407	88	65	58	3/8"-19	20	10
RSC-3050	30	50	44.2	0.221	157	207	107	75	68	3/8"-19	20	9.5
RSC-30100	30	100	44.2	0.442	207	307	107	75	68	3/8"-19	20	12,65
RSC-30150	30	150	44.2	0.663	257	407	107	75	68	3/8"-19	20	15.6
RSC-30200	30	200	44.2	0.884	307	507	107	75	68	3/8"-19	20	18.7
RSC-5050	50	50	70.9	0.3355	163	213	127	95	85	3/8"-19	26	22
RSC-50100	50	100	70.9	0.709	213	313	127	95	85	3/8"-19	26	17.7
RSC-50150	50	150	70.9	1.063	263	413	127	95	85	3/8"-19	26	21.7
RSC-50200	50	200	70.9	1.417	313	513	127	95	85	3/8"-19	26	30
RSC-10050	100	50	132.7	0.664	149	199	177	130	111	3/8"-19	28	
RSC-100100	100	100	132.7	1.327	249	349	177	130	111	3/8"-19	28	34
RSC-100150	100	150	132.7	1.990	277	427	177	130	111	3/8"-19	28	42.5
RSC-100200	100	200	132.7	2.654	327	527	177	130	111	3/8"-19	28	49,35
RSC-15050	150	50	201	1.005	181	231	207	164	144	3/8"-19	31	
RSC-150100	150	100	201	2.010	231	331	207	164	144	3/8"-19	31	
RSC-150150	150	150	201	3.015	281	431	207	164	144	3/8"-19	31	56.9
RSC-150200	150	200	201	4.020	331	531	207	164	144	3/8"-19	31	
RSC-20050	200	50	280.4	1.402	181	231	237	189	169	3/8"-19	31	
RSC-200100	200	100	280.4	2.804	231	331	237	189	169	3/8"-19	31	80
RSC-200150	200	150	280.4	4.206	281	431	237	189	169	3/8"-19	31	
RSC-200200	200	200	280.4	5.608	331	531	237	189	169	3/8"-19	31	

- It has the characteristic of low collapsed height, if the requirement of stroke needs to be higher than RMC series, RC series is suit for this case.
- The surface of principle axis is finished with chrome plate to protect the using of longevity of the product.
- Plunger has the function of retracting automatically WRC rotary head, can work in bevel.



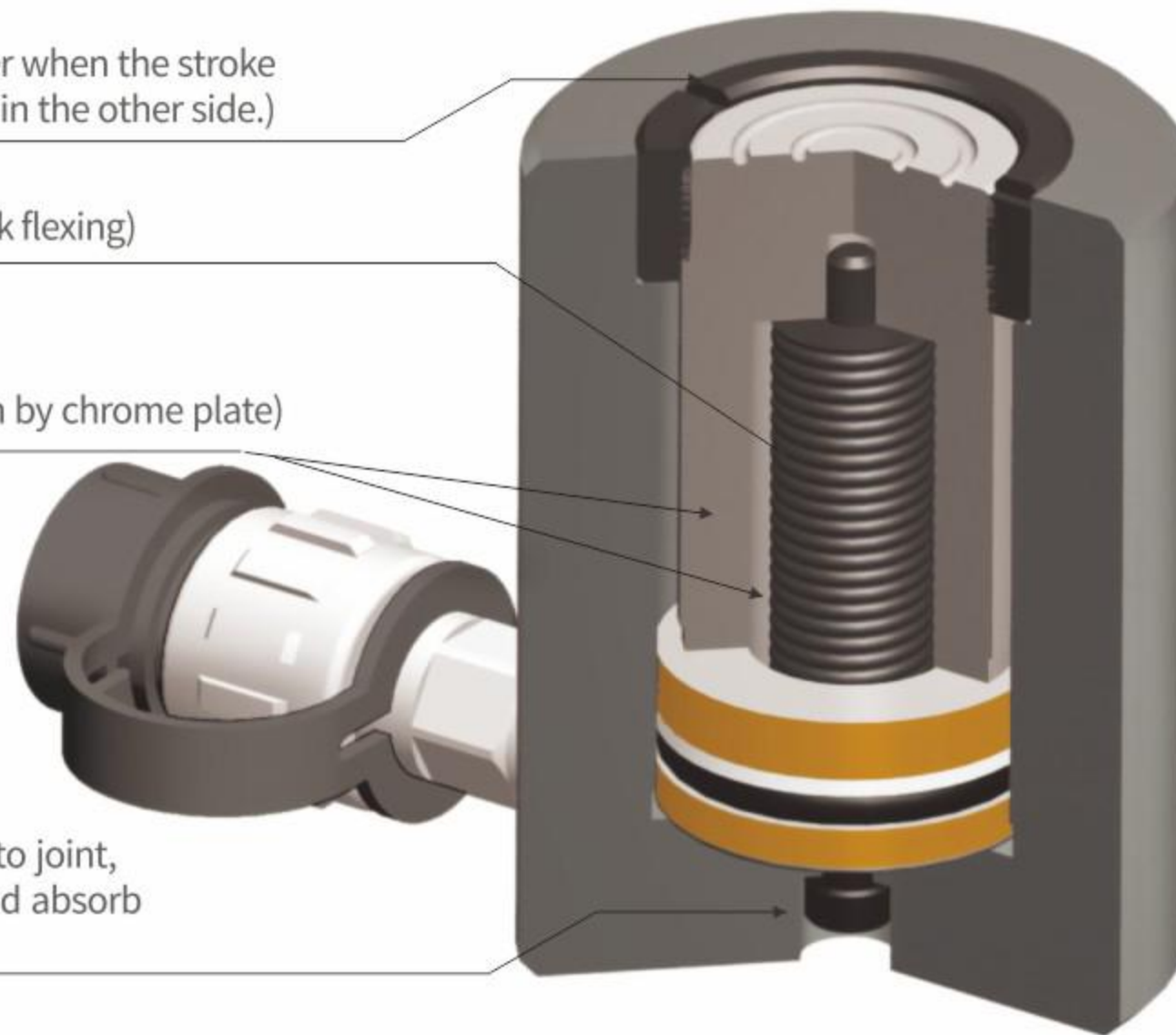
DESCRIPTION OF PARTS

1. Stopping ring (to protect the cylinder when the stroke get to top, absorb heaviness in the other side.)

2. Spring (provide the capability of quick flexing)

3. Cylinder wall and plunger
(they can avoid eroding and less friction by chrome plate)

4. Brass ring (use high quality of brass to joint, to protect the status of overloading and absorb heaviness in the other side.)



TECHNICAL DATA

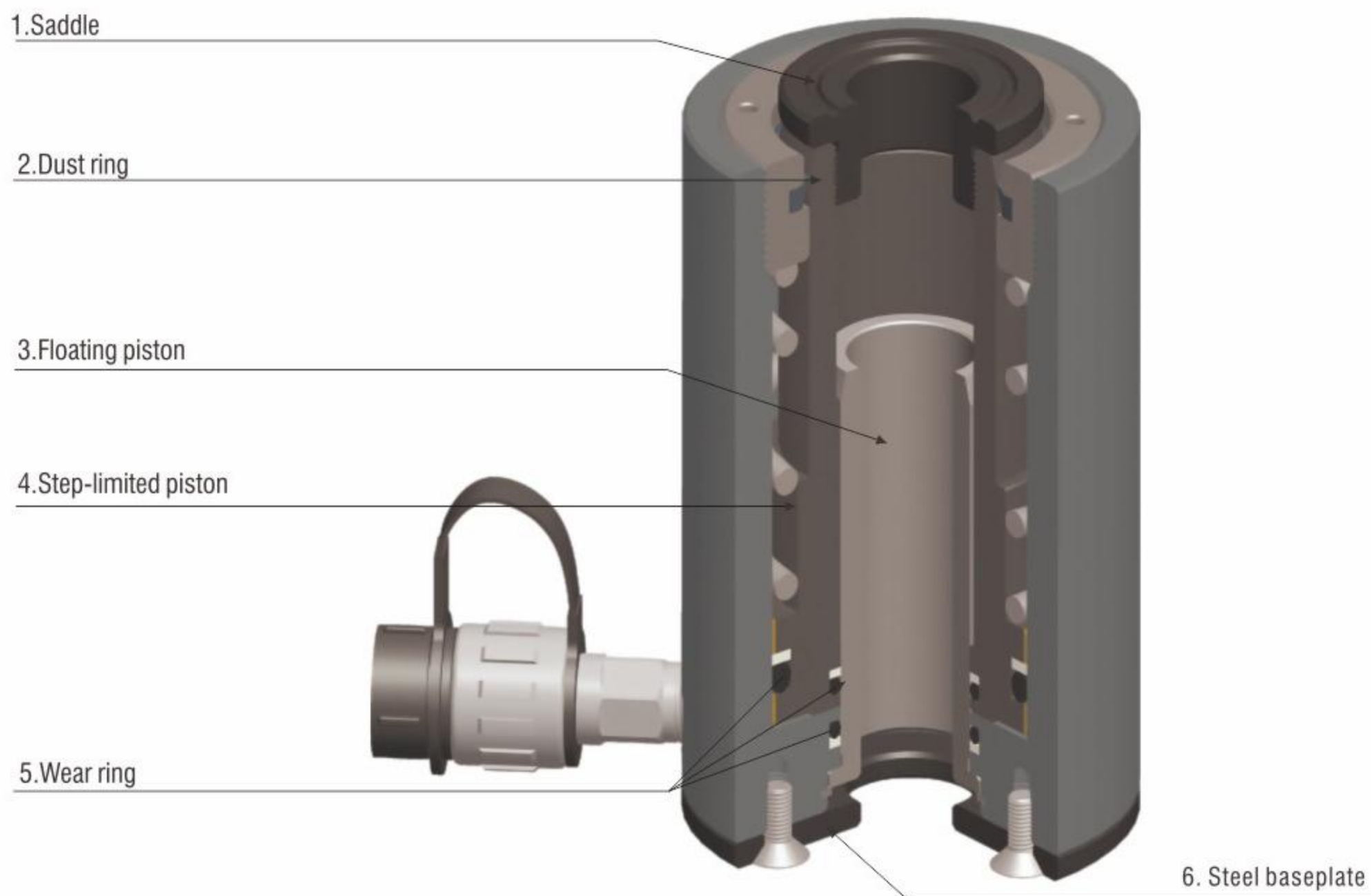
Model No.	Output (t)	Stroke (mm)	Effective area (cm ²)	Oil Capacity (l)	Height of Product (mm)	Extended Height (mm)	Outside Dia (Φmm)	Bore dia (Φmm)	Plunger dia (Φmm)	Thread for Input oil-port (zg)	Saddle Protrusion from Plgr(mm)	Weight (kg)
RC-0550	5	50	4.9	0.0354	121	171	40	30	25	NPT1/4"	1	
RC-1050	10	50	11.3	0.072	96	146	62	45	38	3/8"-19	2	3.3
RC-2050	20	50	22	0.14	98	148	88	65	53	3/8"-19	2	5
RC-3050	30	50	31.1	0.22	104	154	105	75	68	3/8"-19	2	6.6
RC-5050	50	50	56.7	0.354	104	154	128	95	65	3/8"-19	2	9.8
RC-10050	100	50	95	0.66	136	186	175	130	110	3/8"-19	2	24.1
RC-15050	150	50	162.8	1.056	152	202	207	164	144	3/8"-19	2	31.9
RC-20050	200	50	224.2	1.402	156	206	237	189	169	3/8"-19	2	45
WRC-10050	100	50	95	0.66	136	186	175	130	110	3/8"-19	2	24

RCH SERIES, SINGLE ACTING HOLLOW PLUNGER STEEL CYLINDER

- Steel base plate and saddle for protection the hollow piston and cylinder damage and increasing abrasion performance.
- Dust ring stop the dust into cylinder during extension.
- Floating type plunger prevents the block caused by slight unbalance loading of piston.
- Step-limited piston prevents over-travel and is capable of stopping the spring compressed completely.
- Wear ring prevent metal to metal contact, increasing cylinder life and resistance to be scratched.
- High-efficient seal extends cylinder life.
- Handles included on all models.



DESCRIPTION OF PARTS



TECHNICAL DATA

Model No.	Output (t)	Stroke (mm)	Effective Area (cm ²)	Oil Capacity (l)	Height of Product (mm)	Extended Height (mm)	Outside Dia (Φmm)	Bore Dia (Φmm)	Principal Axis dia (Φmm)	Plunger Dia (Φmm)	Oil supply Hole Thread (rc)	Weight (kg)
RCH-2050	20	50	32.8	0.164	166	216	95	75	55	27	3/8"	6.9
RCH-20100	20	100	32.8	0.328	228	266	95	75	55	27	3/8"	9
RCH-20150	20	150	32.8	0.492	290	316	95	75	55	27	3/8"	
RCH-3050	30	50	51.1	0.256	172	238	118	95	70	34	3/8"	10.8
RCH-30100	30	100	51.1	0.512	238	288	118	95	70	34	3/8"	14.5
RCH-30150	30	150	51.1	0.767	208	338	118	95	70	34	3/8"	
RCH-6050	60	50	84.7	0.424	210	261	165	135	100	54	3/8"	17.8
RCH-60100	60	100	84.7	0.848	282	311	165	135	100	54	3/8"	32.4
RCH-60150	60	150	84.7	1.272	357	361	165	135	100	54	3/8"	
RCH-10075	100	75	167.8	1.239	266	330	224	180	140	79	3/8"	
RCH-100150	100	150	167.8	2.478	377	505	224	180	140	79	3/8"	
RCH-100200	100	200	167.8	3.304	451	455	224	180	140	79	3/8"	

Note: All the Spec.rated working pressure is 70Mpa